

Test Report

Report No. RLSHE001226700001

Page 1 of 4

Applicant NANTONG JIEHUA HEAT SHRINKABLE MATERIAL CO., LTD

Address YUAN BRIDGE INDUSTRIAL ZONE TONG JING AVENUE NANTONG

The following sample(s) and sample information was/were submitted and identified by/on the behalf of the client

Sample Name PET Heat shrink tubing
Part No. PET
Material PET
Sample Received Date Oct. 25, 2012
Testing Period Oct. 25, 2012 to Oct. 30, 2012

Test Requested As specified by client, to test Lead(Pb), Cadmium(Cd), Mercury(Hg), Hexavalent Chromium (Cr(VI)), Polybrominated Biphenyls (PBBs), Polybrominated Diphenyl Ethers (PBDEs) in the submitted sample(s).

Test Method

Test Item(s)	Test Method	Measured Equipment(s)	MDL
Lead(Pb)	IEC 62321:2008 Ed.1 Sec.8	ICP-OES	2mg/kg
Cadmium(Cd)	IEC 62321:2008 Ed.1 Sec.8	ICP-OES	2mg/kg
Mercury(Hg)	IEC 62321:2008 Ed.1 Sec.7	ICP-OES	2mg/kg
Hexavalent Chromium (Cr(VI))	IEC 62321:2008 Ed.1 Annex C	UV-Vis	2mg/kg
Polybrominated Biphenyls (PBBs)	IEC 62321:2008 Ed.1 Annex A	GC-MS	5mg/kg
Polybrominated Diphenyl Ethers (PBDEs)	IEC 62321:2008 Ed.1 Annex A	GC-MS	5mg/kg

Test Result(s) Please refer to the following page(s).

Tested by

Verna chen.

Reviewed by

Wrey Zhong

Approved by

Joy Su

Date

Oct. 30, 2012

Joy Su

Senior Laboratory Manager

No. 13574837

Centre Testing International (Shenzhen) Co., Ltd. Shanghai Branch No.1996, New Jinqiao Road, Pudong District, Shanghai



Test Report

Report No. RLSHE001226700001

Page 2 of 4

Test Result(s)

Tested Item(s)	Result
Lead(Pb)	N.D.
Cadmium (Cd)	N.D.
Mercury(Hg)	N.D.
Hexavalent Chromium (Cr(VI))	N.D.

Tested Item(s)	Result
Polybrominated Biphenyls (PBBs)	
Monobromobiphenyl	N.D.
Dibromobiphenyl	N.D.
Tribromobiphenyl	N.D.
Tetrabromobiphenyl	N.D.
Pentabromobiphenyl	N.D.
Hexabromobiphenyl	N.D.
Heptabromobiphenyl	N.D.
Octabromobiphenyl	N.D.
Nonabromobiphenyl	N.D.
Decabromobiphenyl	N.D.

Tested Item(s)	Result
Polybrominated Diphenyl Ethers (PBDEs)	
Monobromodiphenyl ether	N.D.
Dibromodiphenyl ether	N.D.
Tribromodiphenyl ether	N.D.
Tetrabromodiphenyl ether	N.D.
Pentabromodiphenyl ether	N.D.
Hexabromodiphenyl ether	N.D.
Heptabromodiphenyl ether	N.D.
Octabromodiphenyl ether	N.D.
Nonabromodiphenyl ether	N.D.
Decabromodiphenyl ether	N.D.

Tested Sample/Part Description PET Heat shrink tubing

Note: **The sample had been dissolved totally tested for Lead, Cadmium, Mercury.**

- MDL = Method Detection Limit
- N.D. = Not Detected (<MDL)
- mg/kg = ppm = parts per million

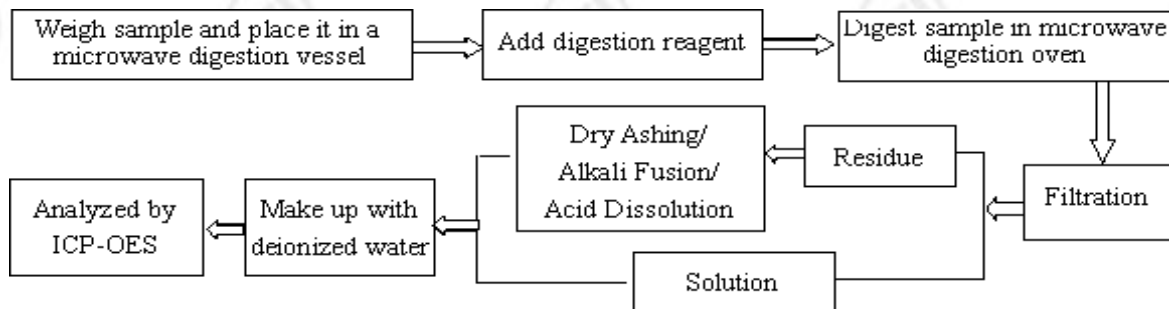
Test Report

Report No. RLSHE001226700001

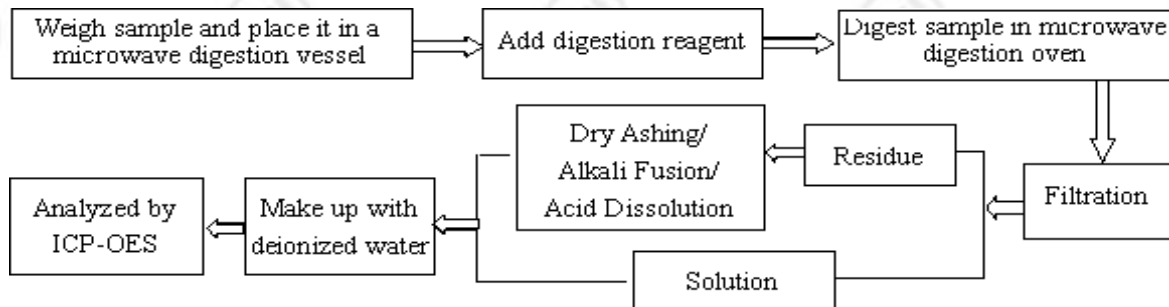
Page 3 of 4

Test Process

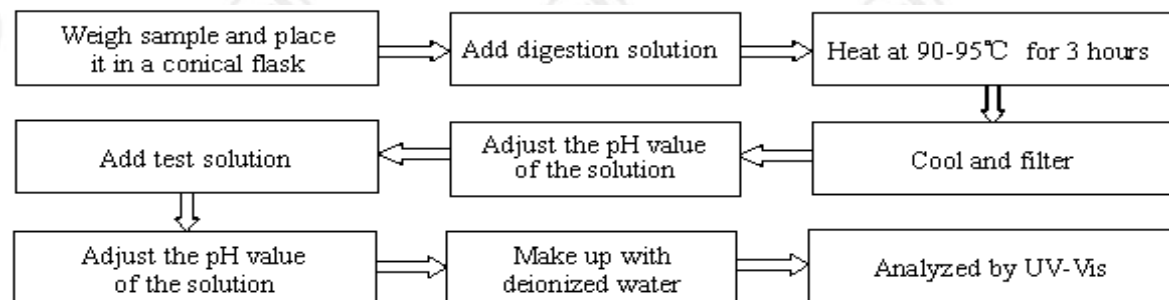
1. Lead(Pb), Cadmium(Cd)



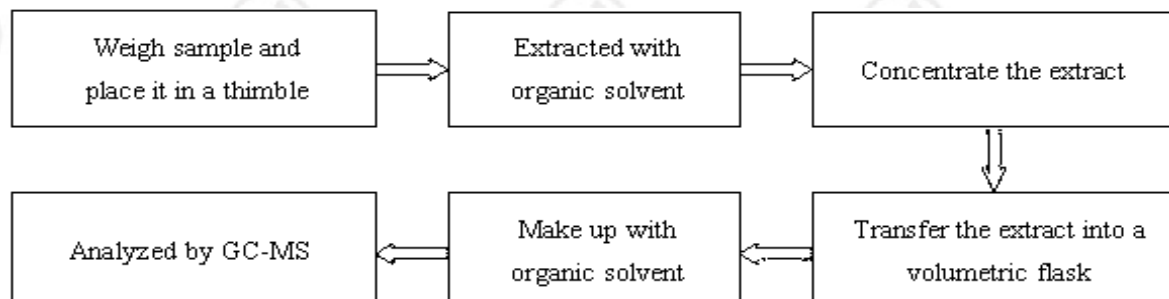
2. Mercury(Hg)



3. Hexavalent Chromium (Cr(VI))



4. Polybrominated Biphenyls (PBBs), Polybrominated Diphenyl Ethers (PBDEs)

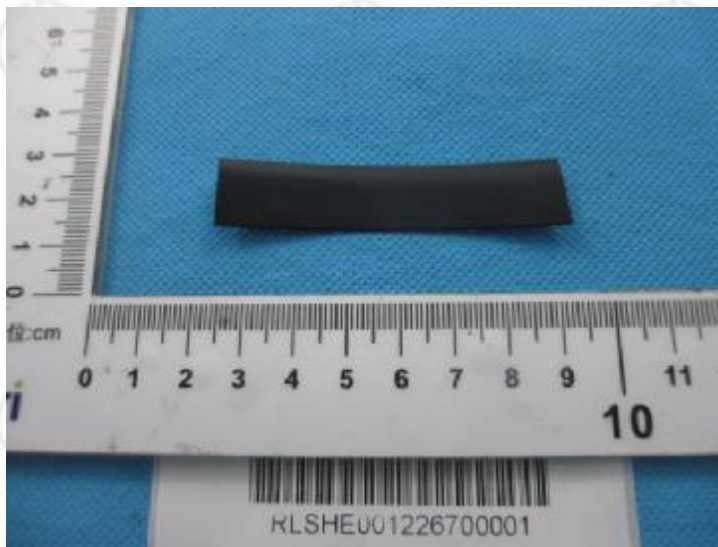


Test Report

Report No. RLSHE001226700001

Page 4 of 4

Photo(s) of the sample(s)



*** End of report ***

The test report is effective only with both signature and specialized stamp. The result(s) shown in this report refer only to the sample(s) tested. Without written approval of CTI, this report can't be reproduced except in full.